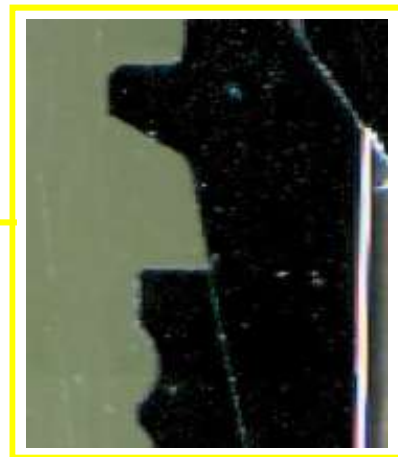
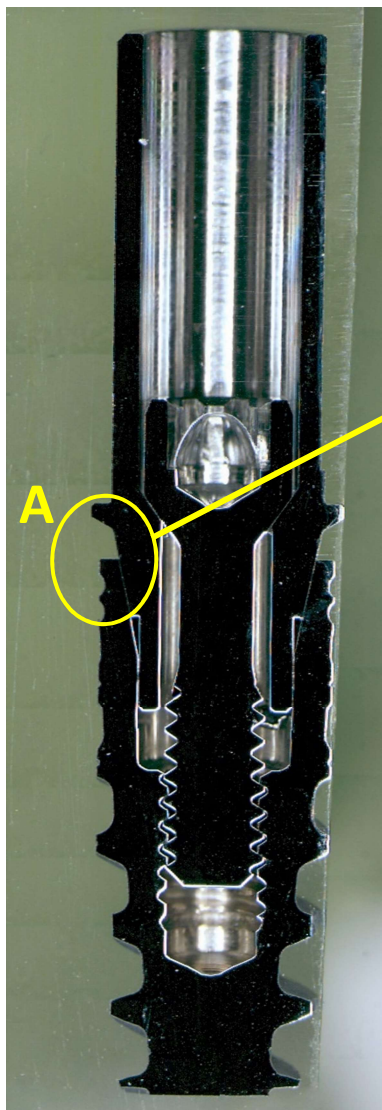


## Fitness Assurance: Titanium Base and Screw

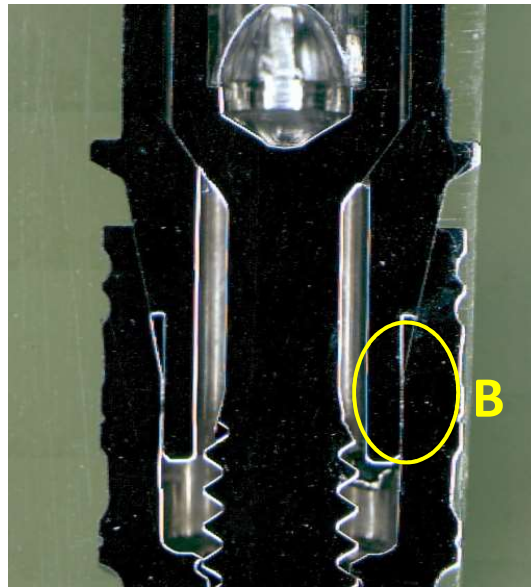
Denracle products are manufactured under the process conform to GMP & ISO regulations. All products are CE certified. The product design and development team consists of dental, engineering and dental material experts. The equipment applied for production are swiss-type lathes. In addition, severe in-production and post-production QC ensure all products are compatible to branded parts.

Following is the fitness test of DENRACLE Titanium base and screw on the original implant.



**Figure 1 (Left): DENRACLE Titanium base and screw on original implant**

**Figure 2 (Right) (Enlarged): Perfect fit between DENRACLE abutment and original implant collar.**



**Figure 3: DENRACLE Titanium base and screw on original implant (enlarged)**

**Findings**

- A. Morse taper: The titanium base is perfectly fit the implant without any gap. This can avoid bacteria intervention and uncontrolled peak stresses.
- B. Anti-Rotation: As the titanium base seat also closely fit the implant, it will not rotate. The hex-shape design also guarantees the retention.

Whenever you choose Denracle, you choose not only a product but a guarantee on quality, precision and a 100% trust-worthy partner.